

“I Know It When I See It”

***un-fluted, thin-bodied,
concave based points***

Tony Baker and John Garrett

From Lubbock Lake to Lehner Ranch

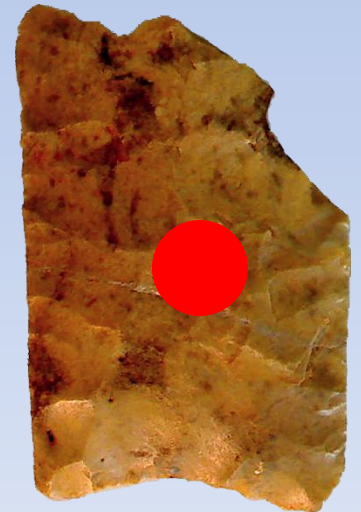
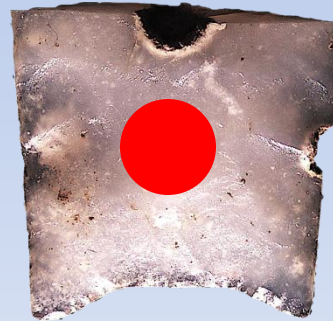
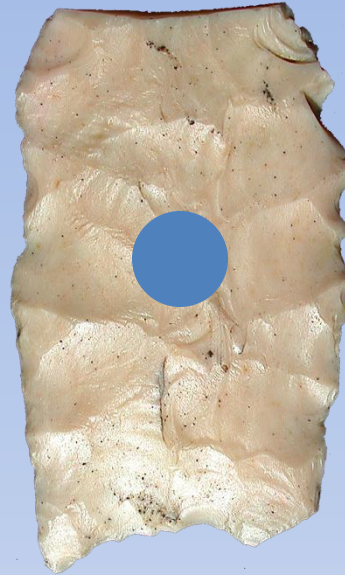
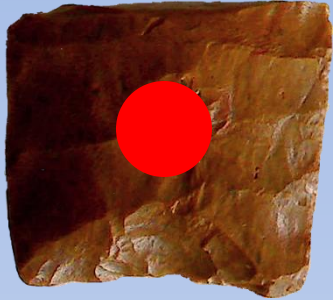
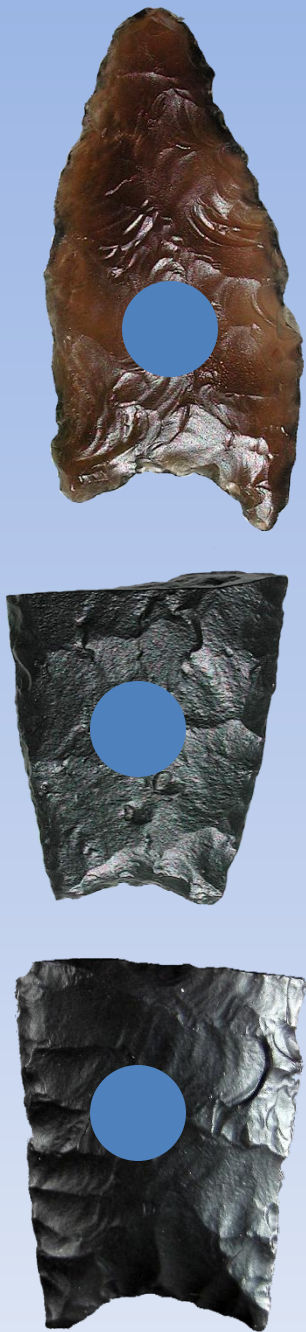
Plains Anthropological Conference 2011
Tucson, Arizona

anyone see a
Plainview point?



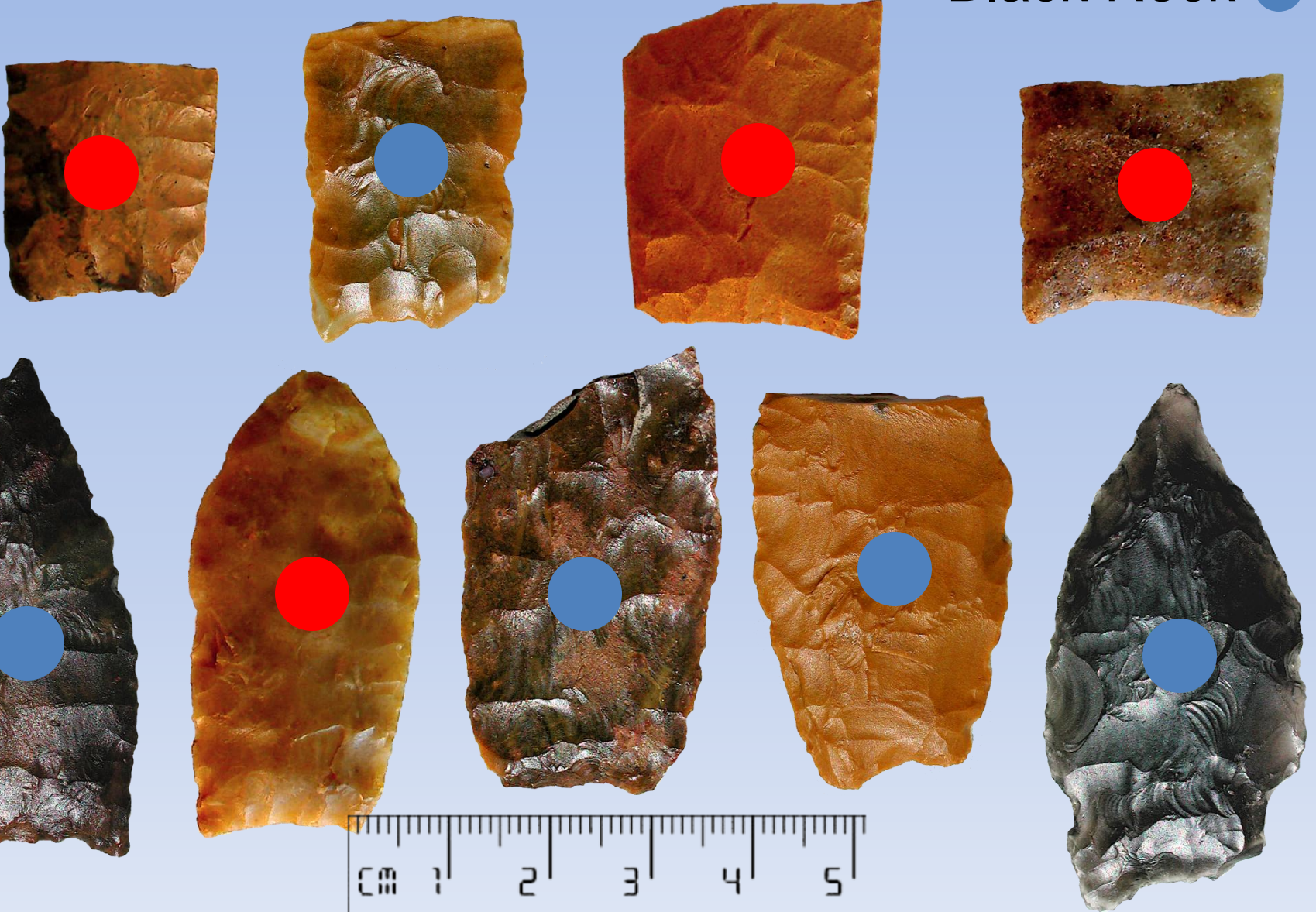
there are none,
instead

Belen ●
Black Rock ●

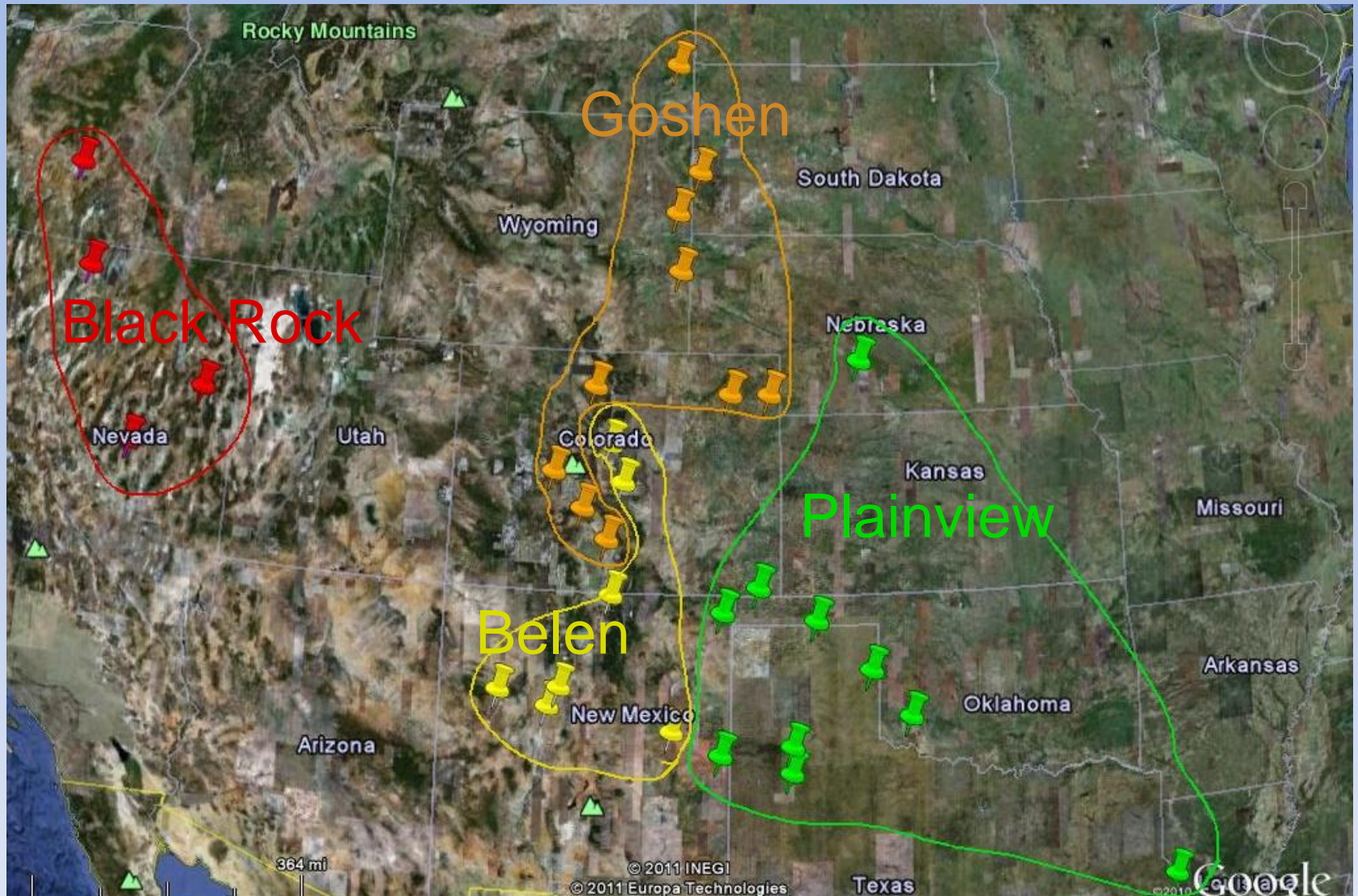


a few more, “pretties”

Belen ●
Black Rock ●

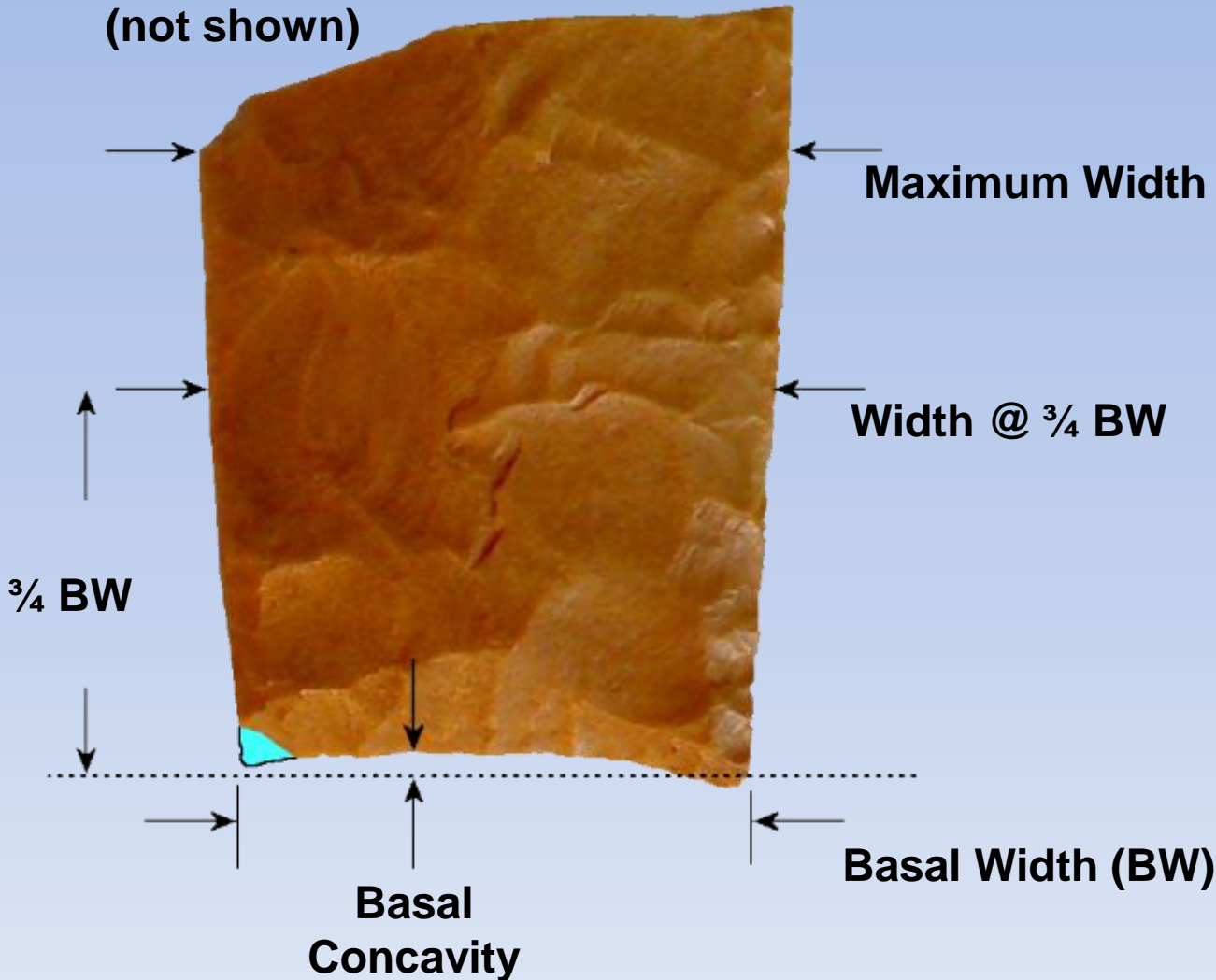


types cluster by region



three morphological parameters

Maximum Thickness
(not shown)

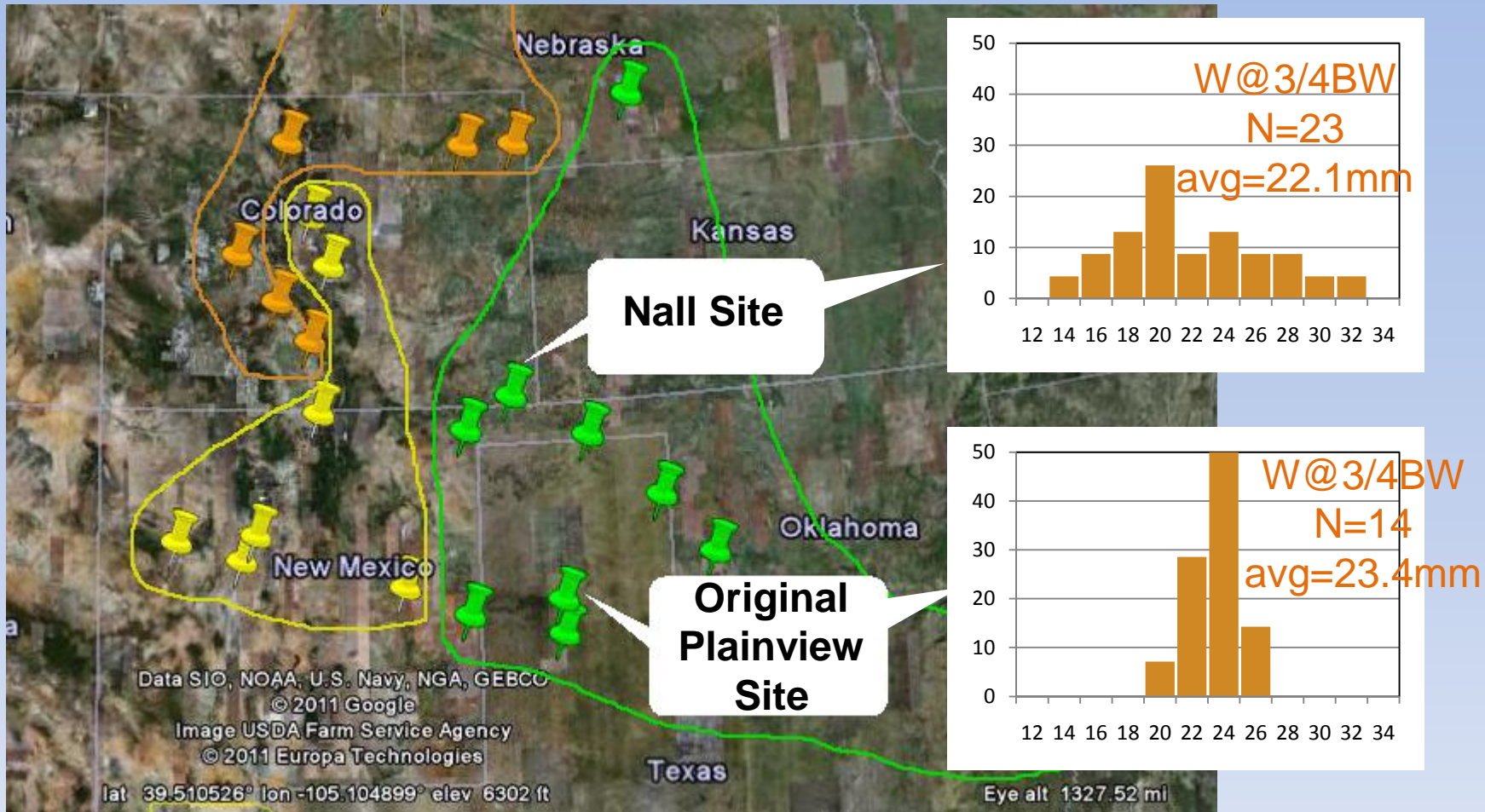


Width @ $\frac{3}{4}$ BW

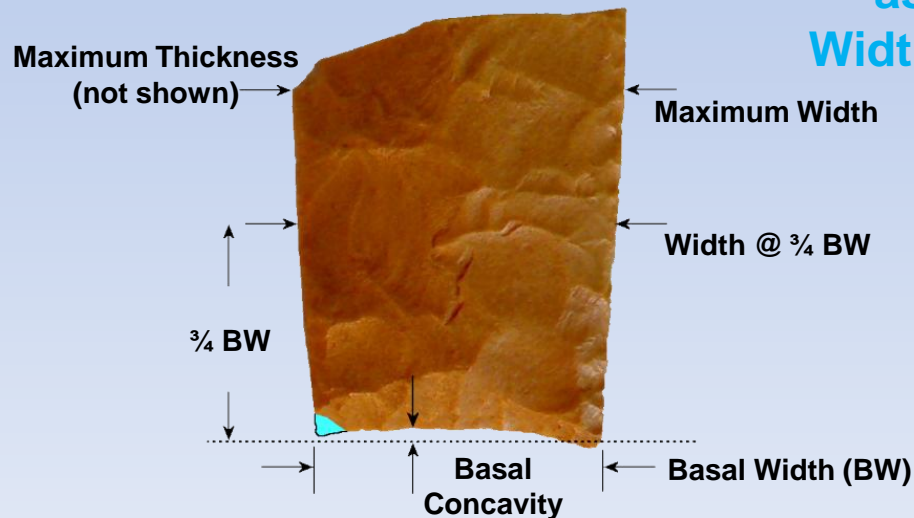
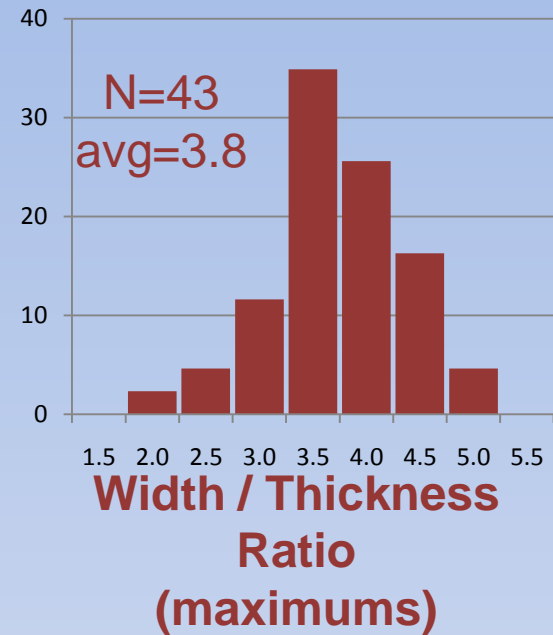
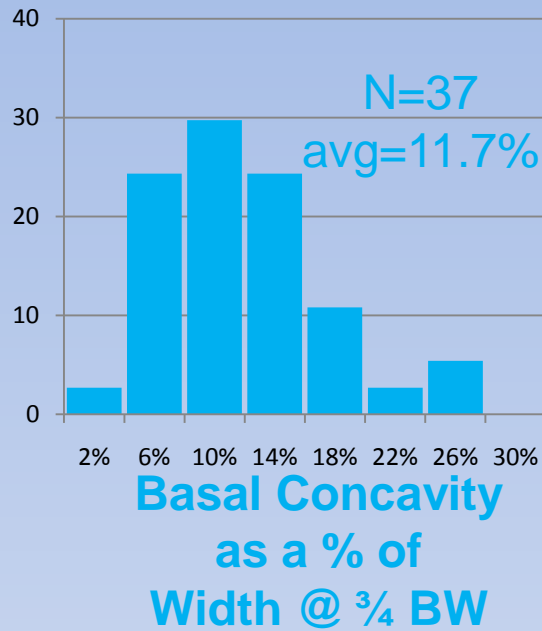
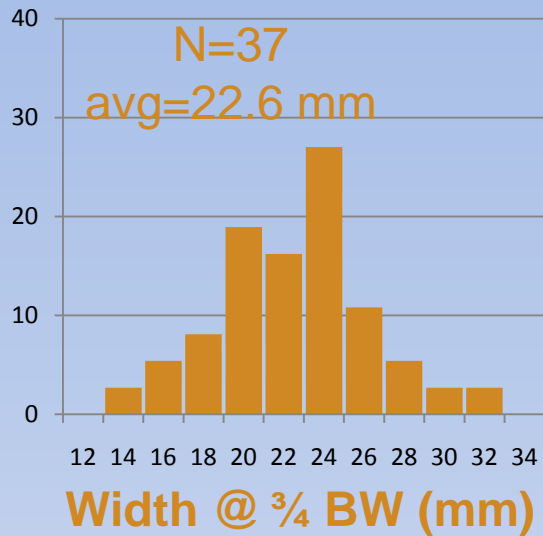
Basal Concavity
as a % of
Width @ $\frac{3}{4}$ BW

Width / Thickness
Ratio
(maximums)

“...was produced by a single or at most two skilled, semi-specialized individuals...”

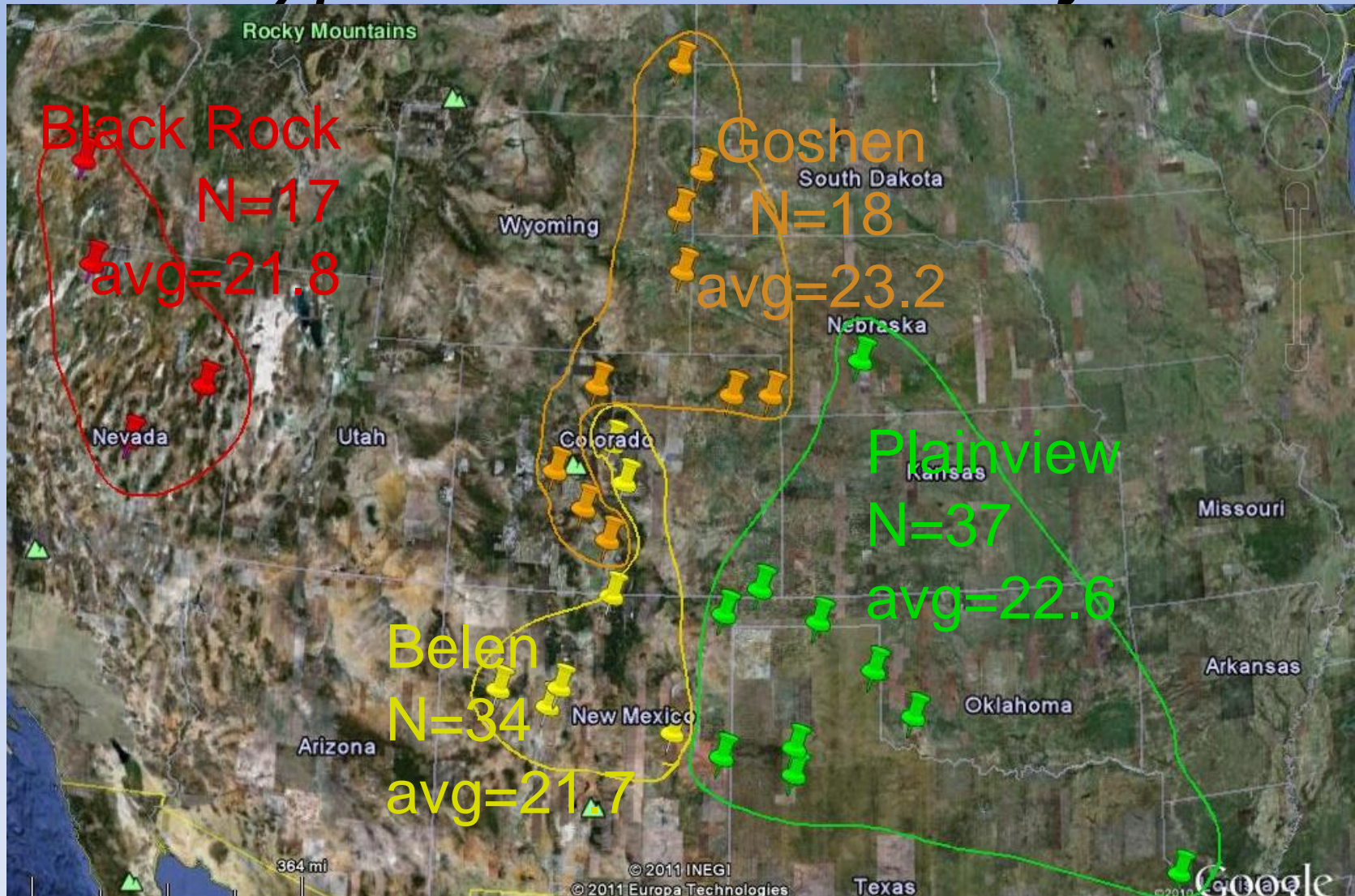


Plainview point metrics combined Plainview & Nall sites

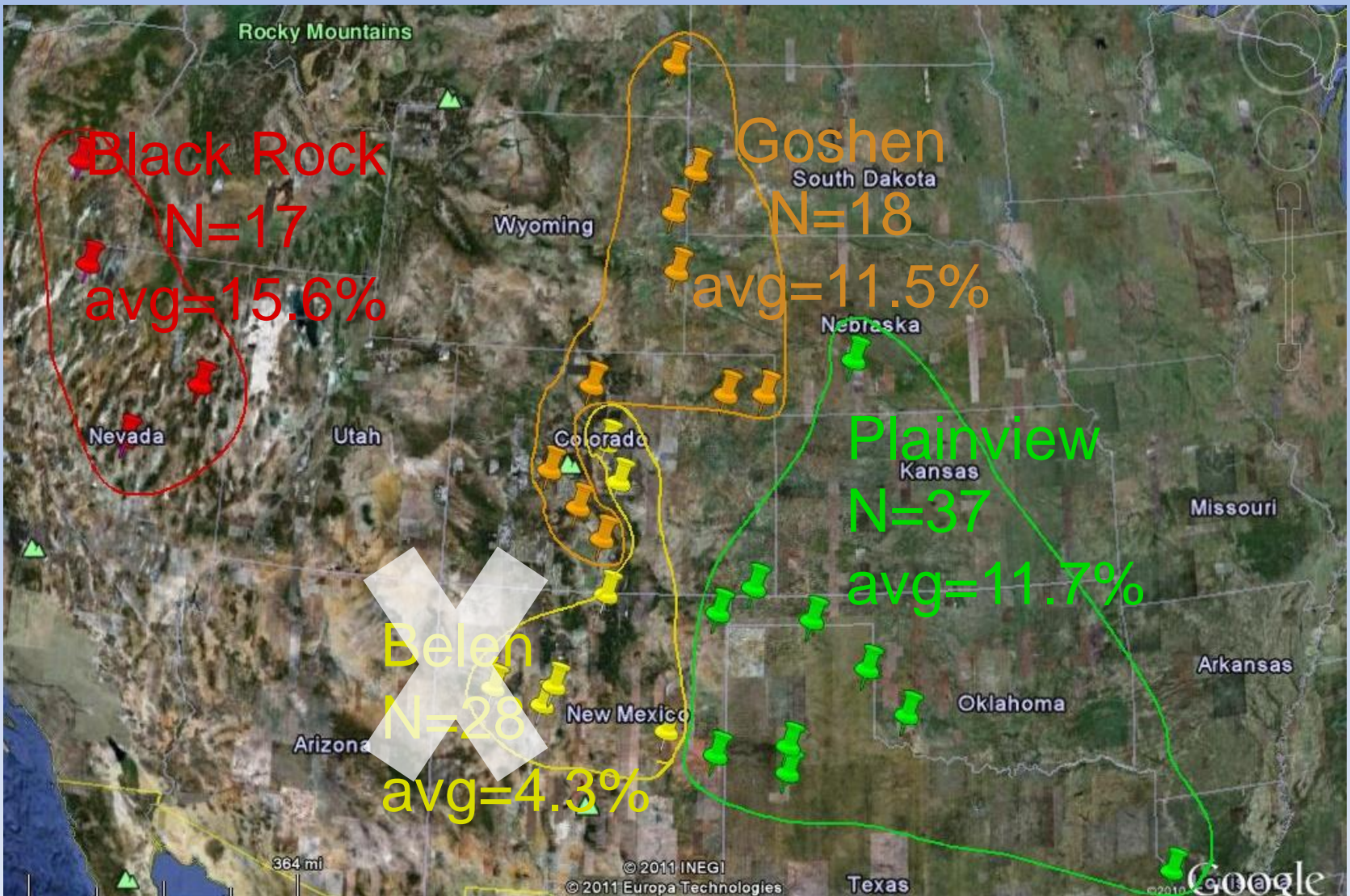


Width @ $\frac{3}{4}$ BW (mm)

null hypothesis can't be rejected

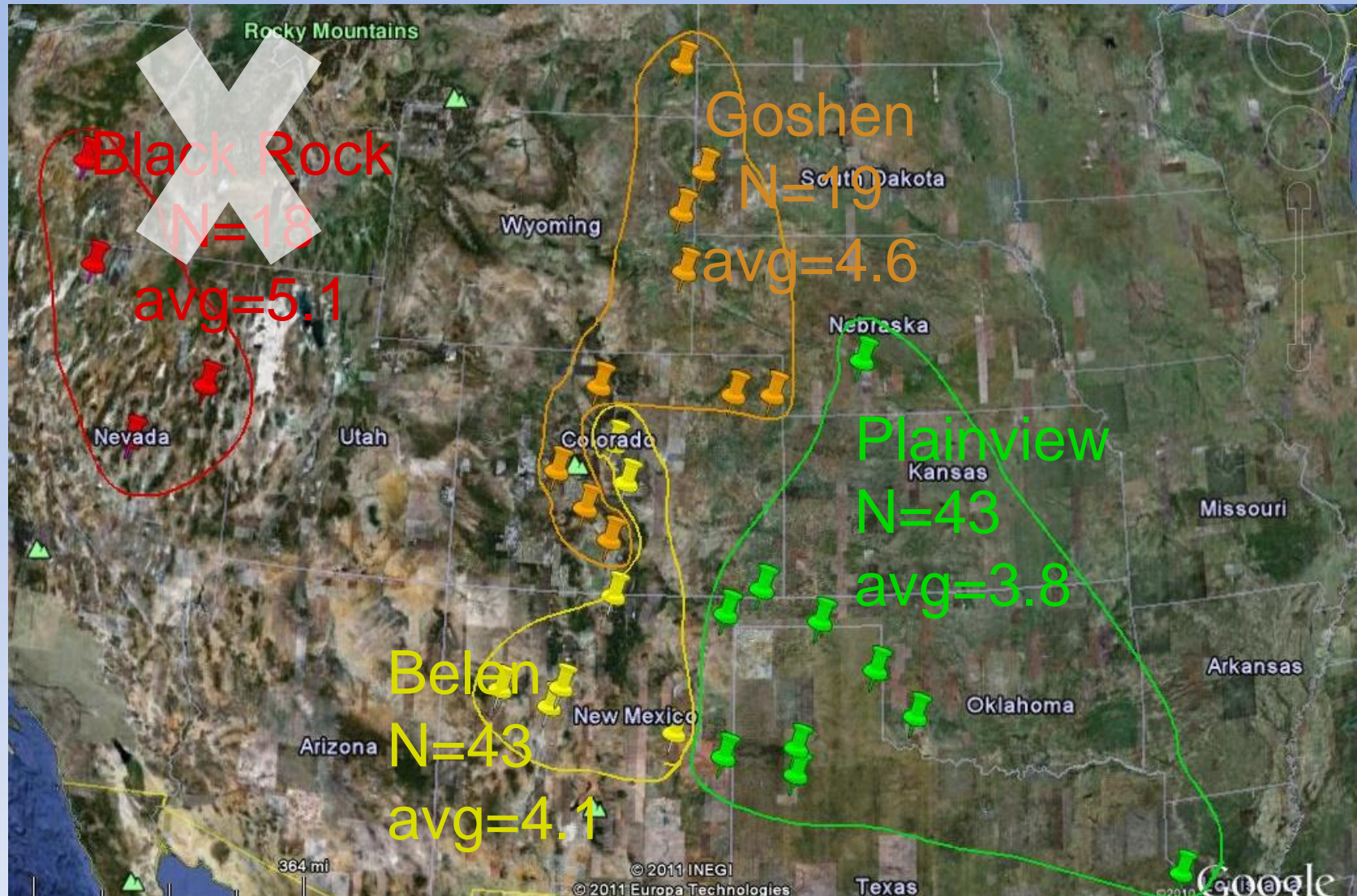


Basal Concavity as a % of $\frac{3}{4}$ Basal Width *null hypothesis CAN BE rejected for Belen*



Width/Thickness Ratio (max's)

null hypothesis CAN BE rejected for Black Rock



Plainview, lowered from temporal type to morphological type

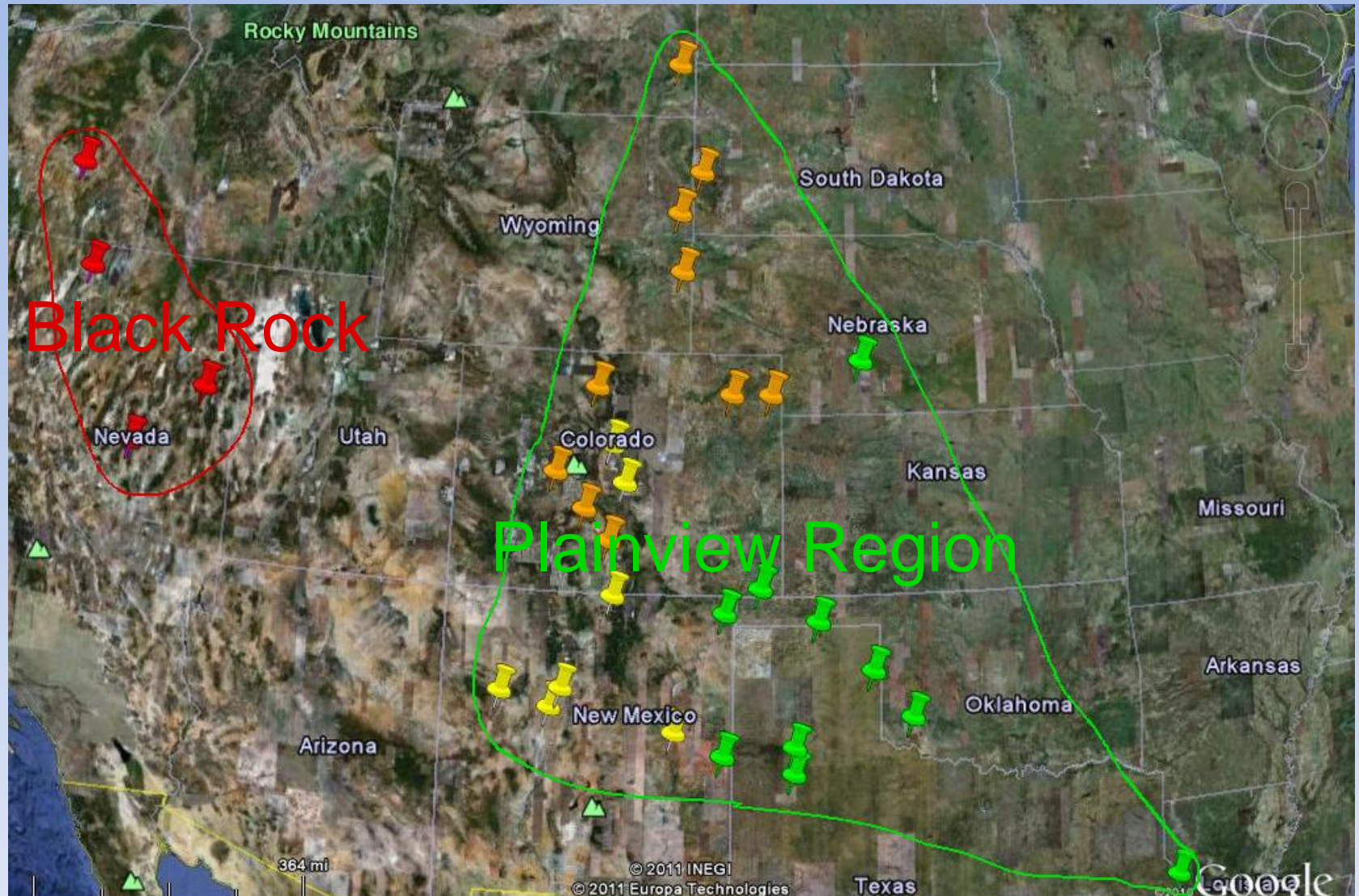
Table 2.1: Approximate beginning and ending radiocarbon dates of Paleoindian complexes from the Great Plains and adjacent regions (summarized from Holliday 2000:265-271).

Complex	Northern Plains (rcybp)	Southern Plains (rcybp)	Woodlands/Texas (rcybp)
Clovis	11200-10900 (possibly to 10800)	11600-11000	
Folsom	10900-10200	10900-10100	
Goshen	ca. 11000		
Agate Basin	10500-10000		
Hell Gap	10500-9500		
Dalton			10500-9500
Alberta/Cody	10200-9400		
Plainview		10200-9800 (possibly to 9000)	
Lubbock Lake		ca. 9950	
St. Mary's Hall			9500-8500
Cody	9400-8800		
Firstview		9400-8200 (possibly to 8000)	
Allen	9400-7800		
Golondrina			9200-8900
Texas Angostura			8800-8000

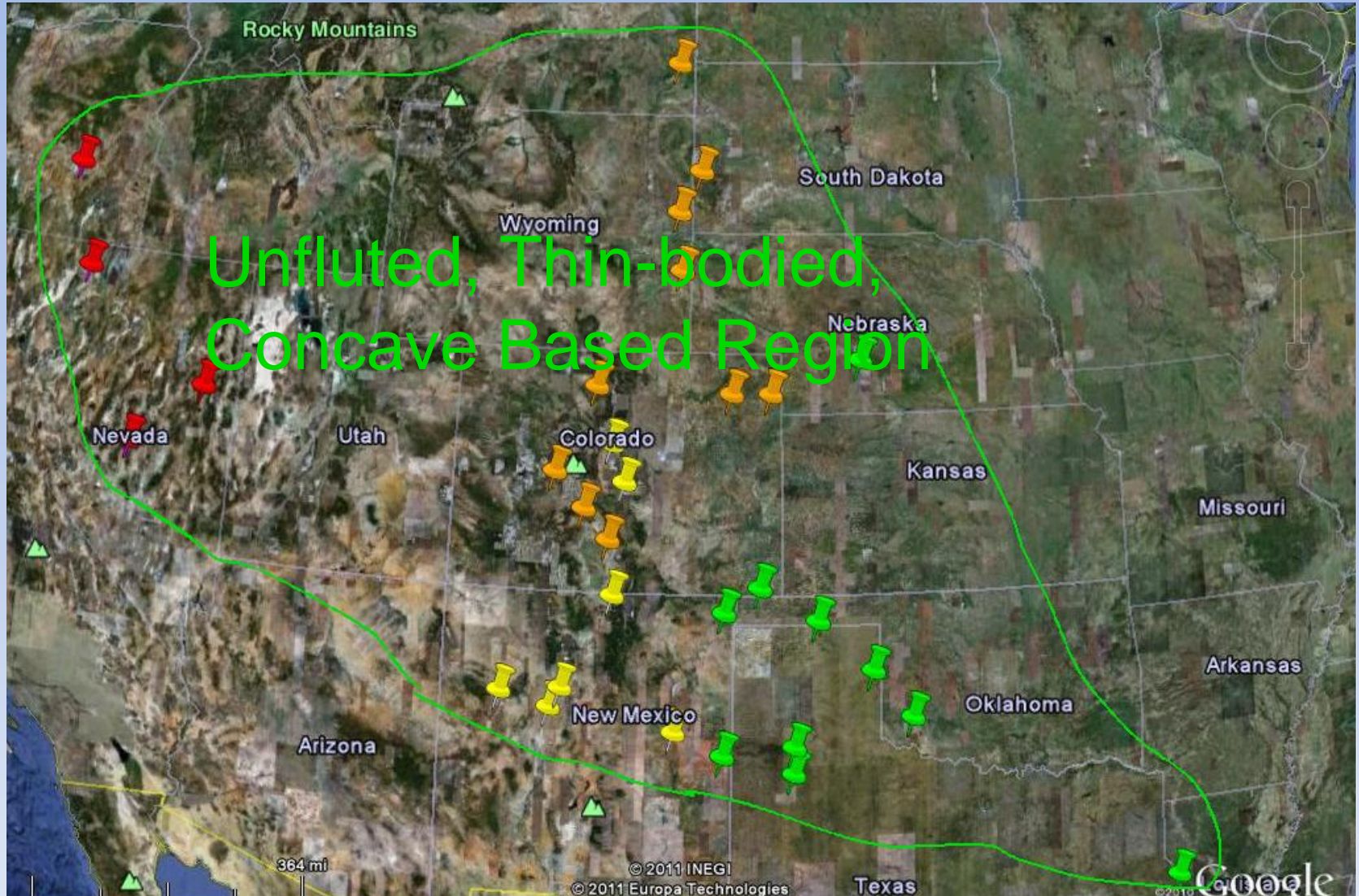
Table modified from Jason LaBelle's 2005 Dissertation

Plainview: a morphological type

1997 view



Unfluted, Thin-bodied, Concave Based: a morphological type 2009 view



fluted
concave based
types

un-fluted
thick-bodied
convex based
types

un-fluted
thin-bodied
concave based
types

Holocene

regular/irregular
collateral
flake scars

regular/irregular
collateral
flake scars

Pleistocene

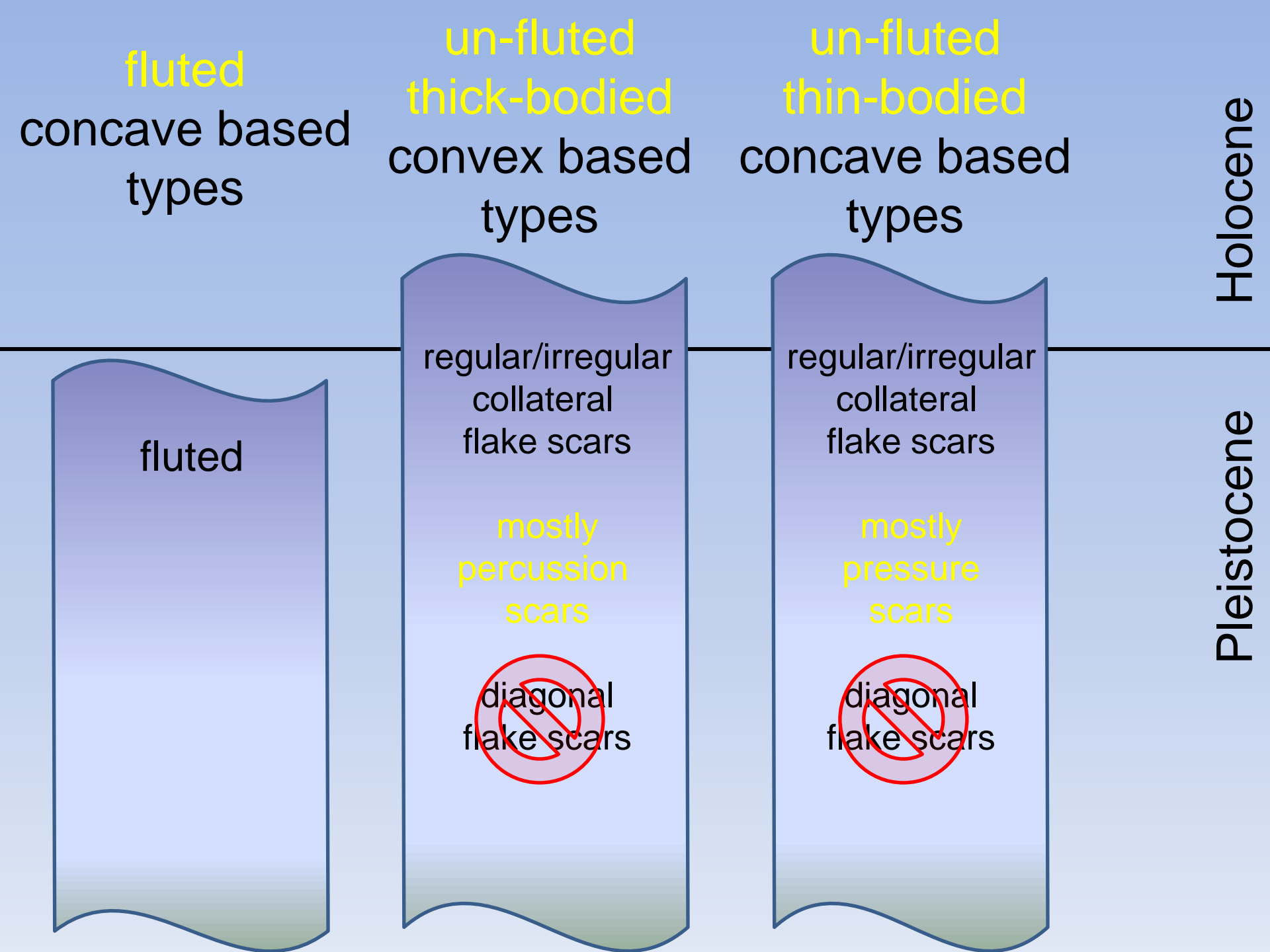
fluted

mostly
percussion
scars

mostly
pressure
scars

~~diagonal
flake scars~~

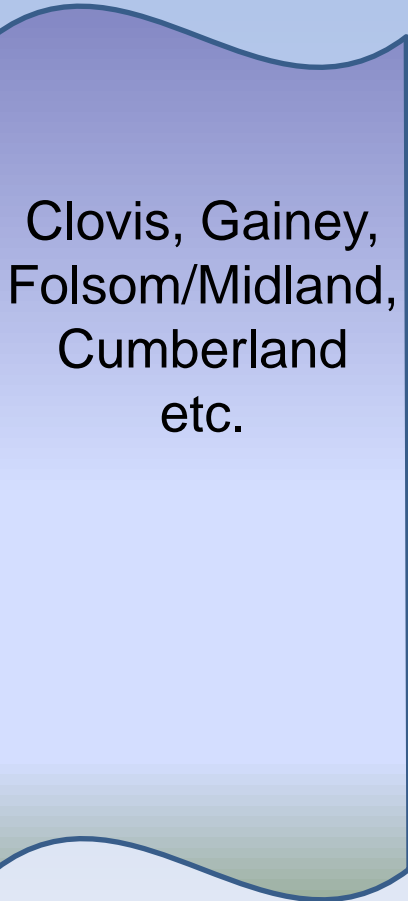
~~diagonal
flake scars~~



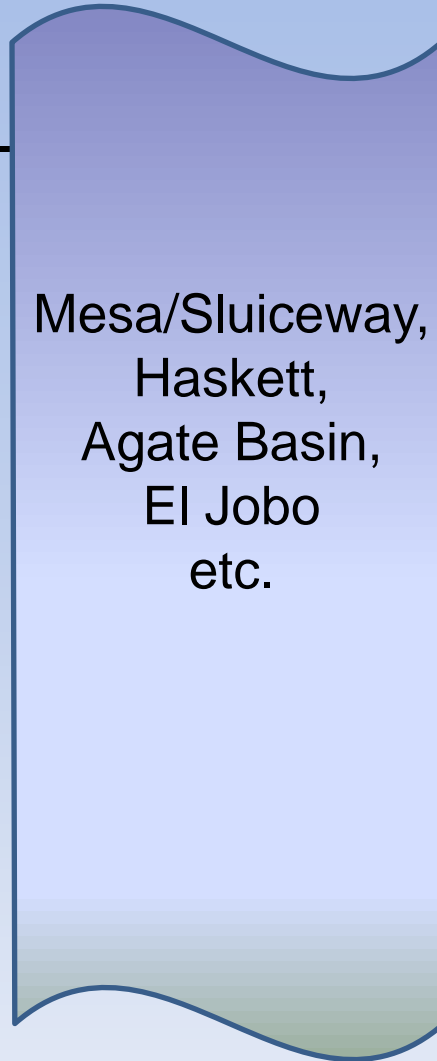
Holocene

Pleistocene

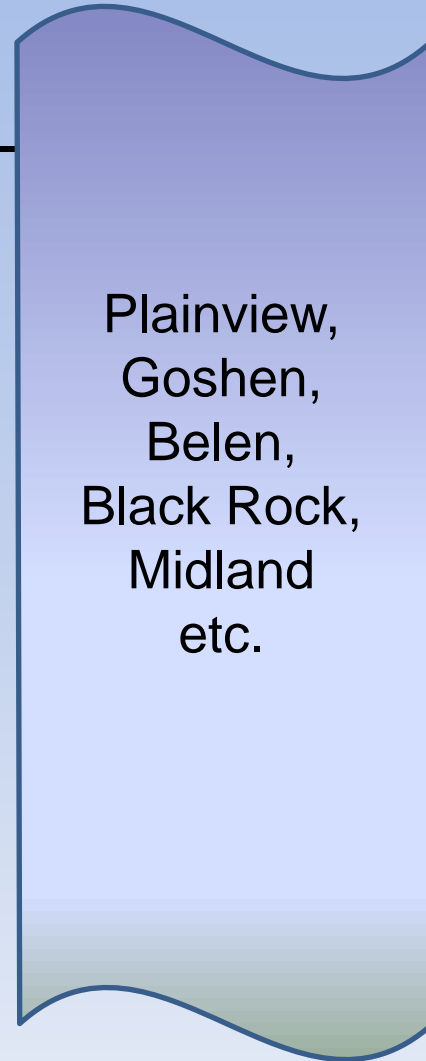
fluted
concave based
types



un-fluted
thick-bodied
convex based
types



un-fluted
thin-bodied
concave based
types



fluted
concave based
types

un-fluted
thick-bodied
convex based
types

un-fluted
thin-bodied
concave based
types

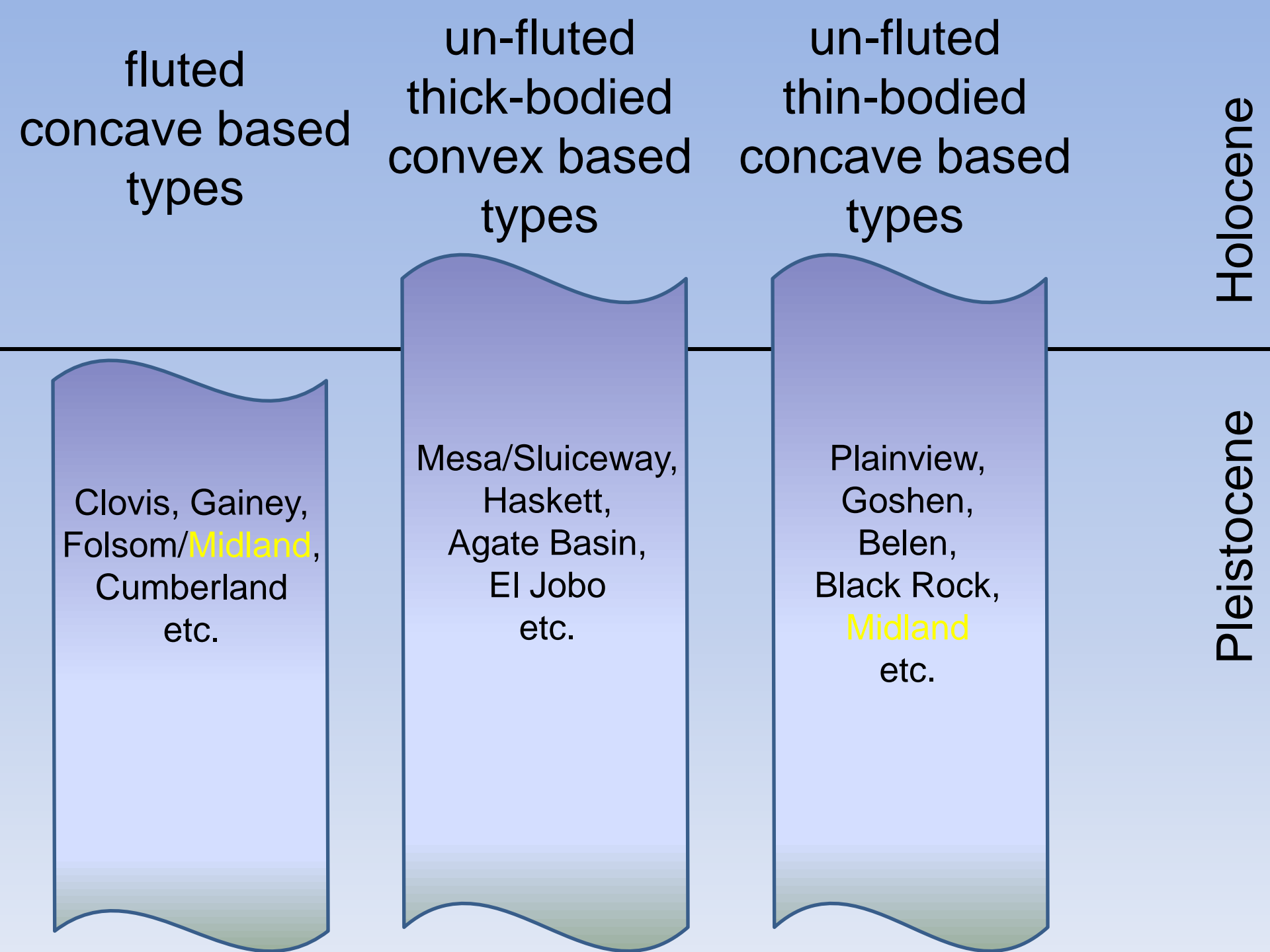
Holocene

Pleistocene

Clovis, Gainey,
Folsom/**Midland**,
Cumberland
etc.

Mesa/Sluiceway,
Haskett,
Agate Basin,
El Jobo
etc.

Plainview,
Goshen,
Belen,
Black Rock,
Midland
etc.



fluted
concave based
types

un-fluted
thick-bodied
convex based
types

un-fluted
thin-bodied
concave based
types

Holocene

Pleistocene

Clovis, Gainey,
Folsom/Midland,
Cumberland
etc.

Mesa/Sluiceway,
Haskett,
Agate Basin,
El Jobo
etc.

Plainview,
Goshen,
Belen,
Black Rock,
Midland
etc.

fluted
concave based
types

un-fluted
thick-bodied
convex based
types

un-fluted
thin-bodied
concave based
types

Holocene

Pleistocene

w/t 2.7 to 7.0

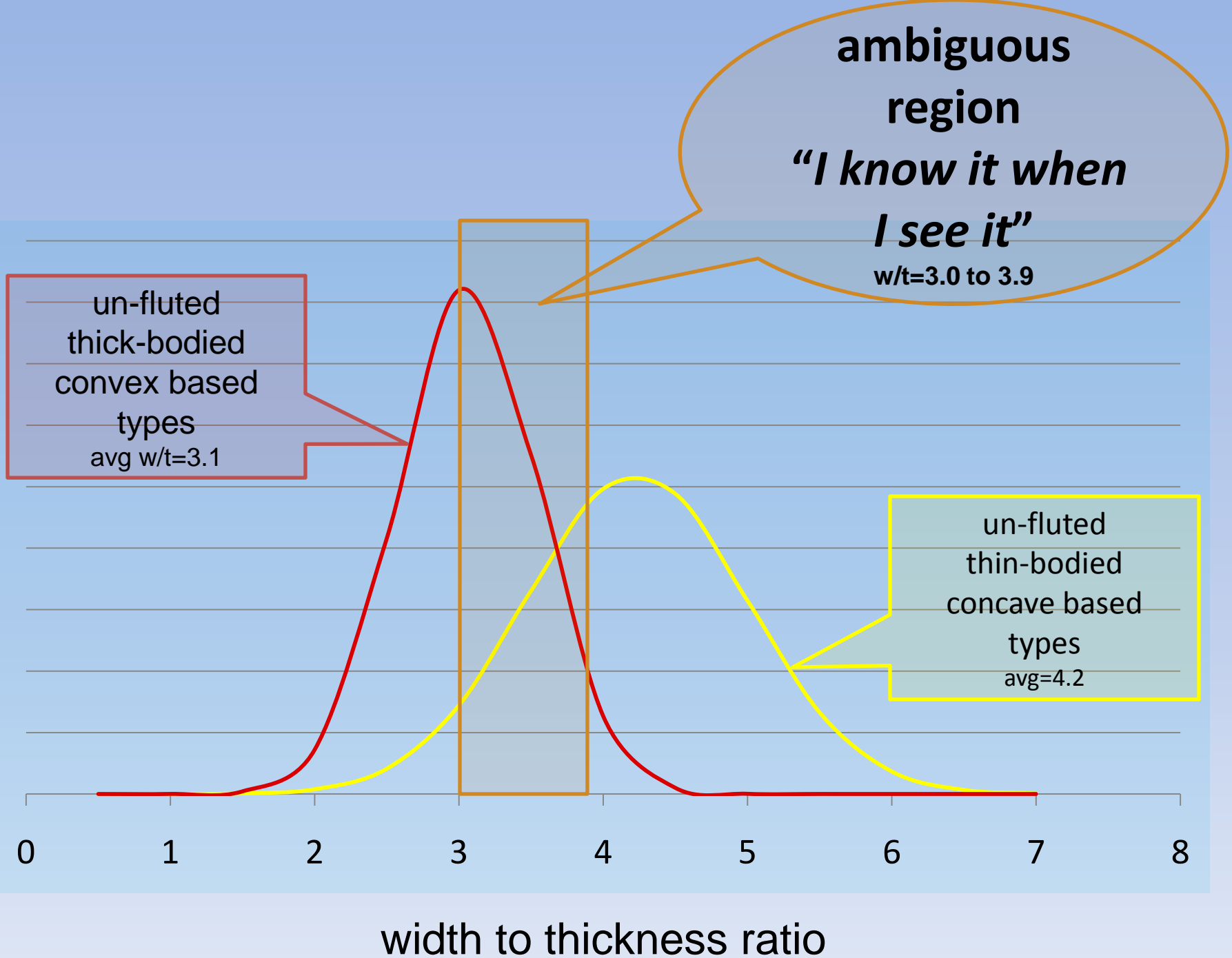
Clovis, Gainey,
Folsom/Midland,
Cumberland
etc.

w/t 2.3 to 3.9
90%

Mesa/Sluiceway,
Haskett,
Agate Basin,
El Jobo
etc.

w/t 3.0 to 5.5
90%

Plainview,
Goshen,
Belen,
Black Rock,
Midland
etc.



I would like to thank

- **David Finnely** for his image and measurements of a Black Rock point.
- **Ruthann Knudson** for a copy of her dissertation.
- **Jason LaBelle** for a copy of his dissertation.
- **Luc Litwinionek** for the invitation to participate in this symposium
- **John Garrett** (my co-author) for images and measurements of the Black Rock points. Plus, for his critical thinking and Power Point assistance.

references

Baker, Tony

1997 The Belen Point: Paleoindian Projectile and Possibly a Plainview Variant. Electronic document, <http://www.ele.net/belen/belnintr.htm>, accessed August 26, 2011.

2004 Clovis First/Pre-Clovis Problem—Revisited 2004. Electronic document, http://www.ele.net/art_folsom/pre-clovis_2004/preclovis2004.htm, accessed August 26, 2011.

Baker, William. E., T. N. Campbell, and Glen L. Evans

1957 The Nall Site: Evidence of Early Man in the Oklahoma Panhandle. *Bulletin of the Oklahoma Anthropological Society*. V:1-20.

Clewlow, C. William Jr.

1968 Surface Archaeology in The Black Rock Desert, Nevada. *Reports of the University of California Archaeological Survey* No. 73. Berkeley.

Frison, George C.

1991 *Prehistoric Hunters of the High Plains*, 2nd edition. Academic Press, New York.

references continued

Frison, George C., C. (Editor), Vance Haynes Jr., and Mary Lou Larson

1996 Discussion and Conclusions. *The Mill Iron Site*. University of New Mexico Press, Albuquerque.

Holliday, Vance T., Eileen Johnson, and Thomas W. Stafford Jr.

1999 AMS Radiocarbon Dating of the Type Plainview and Firstview (Paleoindian) Assemblages: The Agony and The Ecstasy. *American Antiquity* 64(3)444-454.

Judge, W. James

1973 *Paleo-Indian Occupation of the Central Rio Grande Valley in New Mexico*. University of New Mexico Press, Albuquerque.

Knudson, R.

1983 *Organizational Variability in Late Paleoindian Assemblages*. Reports of Investigation No. 60. Pullman: Laboratory of Anthropology, Washington State University.

references continued

Thomas, David Hurst

1999 Archaeology: Down to Earth. 2nd ed. Harcourt Brace College Publishers. Fort Worth.

Wormington, H. M

1964 Ancient Man in North America, 5th edition. Denver Museum of Natural History, Denver.